



## **Rules Rally Obedience® - DOG 2018**

### **1. General rules**

FICSS, in full respect of the statutory laws have issued a regulation unique to the discipline of Rally-Obedience to ensure their members with the ethical and moral values in terms of ethics, in order to protect the mental and physical well-being of the dog.

Rally Obedience (Rally-O) is a sport for all dogs. FICSS promotes this discipline to encourage a positive relationship between dogs and their conductors, a relationship based on mutual trust and respect. Therefore, the rules of the races and judging criteria encourage positive strengthening during Rally-O and prohibit the use of physical or verbal corrections. The collaboration on the race course of Rally-O is more important than accuracy in performing the various exercises. Our goal for both the dog and the conductor is to have a pleasant time on the Ring of the race.

### **2. Requisiti del cane per la partecipazione alle competizioni**

#### **Art. 1 General conditions to participate**

Purebred dogs and hybrids can join the race as long as they are at least 6 months old.

Females in heat cannot take part in the competitions.

a) Dogs must be led by their owner or by a member of its family at all levels.

Dogs with disabilities can participate in the Rally-O races unless they show signs of pain or discomfort. It is up to the judge to exclude dogs showing these signs.

Dogs suffering from infectious or contagious diseases, with injuries or lameness, with joint problems or recovering from surgery, females in advanced pregnancy or breastfeeding, anyone experiencing difficulty in walking and aggressive behaviour towards people or other dogs cannot take part in the races.

Dogs must wear a collar band, properly adjusted, during the competition. It would be better to use the H-harness or the "Norwegian" type (with front band), also properly adjusted. In the L1 classes the dog will be conducted using a leash, long 1.5m not in tension..

The dog cannot enter more than one class during the same race.

In order to participate, dogs must be tattooed and/ or have a microchip and all medical records with all the vaccinations recorded and countersigned by the veterinary doctor who made them, must be submitted. Valid anti-rabies vaccinations must have been made at least 40 days before the race.

Participants must behave in a correct and civilized manner, in case this behaviour is not respected the judge may expel the participant, without any contradiction.

Participants to the race must be in possession of the FICSS DOG HANDBOOK released by the secretariat of the organization.

The competitions and all the level upgrades are recognised and sponsored by both the organizations.

#### **Art. 3 Judging criteria**

Unlike what usually happens in the Obedience, the dog and the conductor enter the ring with 200 points. The Judge observes the binomial and makes sure it follows the instructions given by the signs. The Judge records on the marking sheet any points subtraction when errors occur.

Minor errors that would result in a deduction of ½ point are not considered. For example, sitting slightly in the wrong way does not involve penalties, while sitting far or almost perpendicularly determines a penalty point.

The leash must be held so that there is no tension on the collar when the dog is at the conductor's feet. It can be held with one or both hands; besides the leash and the hand position can change during the course of the race. The body posture and the hand must be relaxed and natural. During the conduct, the conductor must not give the impression to be luring the dog.

**START.** When the dog and the conductor are ready on the starting line, the judge will give authorization to start the race. Both assessing and timing begin when the pair crosses the start line. Unless indicated by a sign, it is not required to start the race with the dog in the sitting position. The competitor cannot run at the starting line.



## FEDERAZIONE ITALIANA CINOFILIA SPORT E SOCCORSO

ASSOCIAZIONE DI PROMOZIONE SOCIALE – iscriz. N. 77 Reg. Naz. Min. Lav. e Politiche Soc. (L. 7-12-2000 n. 383)

[www.ficss.it](http://www.ficss.it) – e-mail: [segreteria@ficss.it](mailto:segreteria@ficss.it)

### ASI SETTORE CINOFILIA



Rev. 1-2017

**FINISH.** Assessing and the stopwatch stop when the competitors cross the finish line, whether they do or not the BONUS. The BONUS exercise is not considered in the time of the race.

#### Penalty points

- 1 THIGHT LEASH, TOUCH AN OBSTACLE, SIGN ON THE WRONG SIDE
- +1 CONTROL ISSUES, LOOSE 270°, IN THE STAND 1 POINT FOR EACH STEP, THE SET PACE IS NOT MAINTAINED, THE DOG BARKS SEVERAL TIMES OR IT JUMPS ON THE CONDUCTOR
- 3 REPEAT AN EXERCISE OR PART OF IT (if allowed); DOUBLE COMMAND; DROP OF FOOD; THE CONDUCTOR GETS MORE THAN 150 CM AWAY FROM THE CONDUCTION LINE TO ENCOURAGE THE DOG TO JUMP; LURING THE DOG OR USE OF INCENTIVES (FOOD, BALLS, PUSH-PULL TOYS).
- 5 THE CONDUCTOR GETS IN FRON OF THE JUMPING OBSTACLE WHILE ENCOURAGING THE DOG; EXERCISE NOT COMPLETED DESPITE THE DOUBLE COMMAND; THE CONDUCTOR DOESN'T DO THE PIVOT; FALLEN CONES AND SIGNS; JUMP, SLALOM, DO THE SPIRAL BACKWARDS OR IN THE WRONG DIRECTION.
- 1:10 MISTAKES IN ALL THE ELEMENTS IN THE EXERCISE
- N.Q. MISS A STATION; BAD BEHAVIOUR TOWARDS THE DOG; OFFENCE TO THE JUDGE; DOG SHOWS THREATENING AND AGGRESSIVE BEHAVIOUR; THE DOG LEAVES THE RING.

N.B.: In the assessment of the conduct the distance between the dog and the conductor is taken into account: if this distance is homogeneous (dog near the conductor or distant not more than 30 to 40 cm) there is no penalty.

#### SIGN POSITION

Along the race course, the conductor must have the signs on his right, except those indicating a change of direction, which must be executed before the sign; jumps, spirals and slaloms will be on the left. The corresponding exercise must be performed within 80 cm away from the sign.

#### BONUS EXERCISE

The BONUS exercise is optional. Competitors are not required to do the bonus, but they should tell the Judge their decision before the start of the race. Each level has different Bonuses. The BONUS is chosen by the Judge who can only use one in each race. The bonus is worth 10 points. If there are no errors, 10 points are added to the score of the race. In case of an error the number of points obtained is added to the score of that race. If you do not get the bonus points, the score of the race will not change. However, if while doing the BONUS exercise dog has a behaviour NQ (leave the Ring - attacks, etc.), the ALL performance becomes NQ. The BONUS exercise is always done after the competitors have crossed the finish line and the stopwatch has been stopped.

#### Art. 4 Assessments

1. ALL JUDGMENTS ARE FINAL;
2. As long as behaviour is concerned, the pairs will be evaluated from the time they arrive on the race course and the rest places, until the time they leave;
3. The results obtained will be entered in the official FICSS Dog Handbook (recognized by both organizations);
4. Rally-O competitions will be assessed by judges recognised by FICSS . The judges are recognised by both organizations and they are interchangeable in time of need. The judge is assisted by one or more stewards to record any penalties on the marking sheet or to time the race. Penalties will be given according to the table shown.
5. The Judge and his collaborators (stewards and assistants) will cover the entire race course, during the execution of the various binomials, making sure to keep the right distance from the pair, so that the detection of situations described in this regulation are indeed possible .
6. At any moment the Judge can:
  - a) Interrupt the race if the contestant is not able to do it
  - b) Expel a contestant who is not following the rules and has an undesirable behaviour (physical or verbal abuse towards the dog, indecent clothing, swearing, etc)



Registrazione n. 2011004362 del 21/10/2011



# FEDERAZIONE ITALIANA CINOFILIA SPORT E SOCCORSO

ASSOCIAZIONE DI PROMOZIONE SOCIALE – iscriz. N. 77 Reg. Naz. Min. Lav. e Politiche Soc. (L. 7-12-2000 n. 383)

[www.ficss.it](http://www.ficss.it) – e-mail: [segreteria@ficss.it](mailto:segreteria@ficss.it)

## ASI SETTORE CINOFILIA



Rev. 1-2017

### EXPULTION FROM THE RING and/or EVENT AREA

A dog with a threatening behaviour that attack people or other dogs will be expelled from the Ring and this will be recorded on its marking sheet as “N.Q.”(not qualified).

A dog showing threatening behaviour and that attacks people or other dogs outside the Ring but in the area in which the games take place, will be expelled from that area.

The judge may dismiss a competitor who does not respect the rules or behaves in an undesirable manner towards dogs or people (including the Judge).

The Judge can take action with regard to physical and verbal abuse. Any act of brutality against their dog, or someone else's, by a conductor, will be punished with immediate disqualification from all events and competitions organized by FICSS the expulsion. Other actions can still be implemented at the conductor's expense.

The Judge has the right to interrupt the race if the binomial competing can't execute it. If the Judge discovers any executive problems, than the exercise can be stopped but the binomial can be allowed to carry the race to an end.

### B – Responsibility

#### Delegate

The delegate is the guarantor of the rules and has the obligation to give the FICSS secretariat, the enrolment forms and the ranking results. The organization hosting the event will keep a copy of the ranking results and of the marking sheets. Any complaints are to be reported to the delegate.

#### Steward

The steward has to record all the penalties given by the judge, copy them on the marking sheets and also record the time taken by the contestant. The steward might also be a delegate and vice versa.

#### Contestants

All participants must respect the rules or they will be disqualified. The conductor can speak to the dog, praise it, encourage it, reinforce it, clap or even tap his/her own lap and use any kind of verbal or gestural encouragement through the entire race. The conductor can't touch the dog or correct its direction using the leash and the dog can't be punished.

### ELIMINATION

#### Participants will be eliminated if:

1. there are problems with the behaviour of the dog (dogs that try to bite or attack other dogs or people will be excluded by the judge from all the races happening that day; all bad behaviours shown will be recorded in the FICSS dog handbook);
2. the dog is not kept under control during the race;
3. the conductor touches the dog to adjust its position;
4. the conductor uses the leash to correct the dog in any way (pulling the dog or voluntary tensions created by the conductor);
5. reinforcement used as an incentive not declared (conductor holding food while away from those station that require food);
6. unfair or harmful behaviour of the conductor towards people or dogs.

### Art. 6 Schedule of the Competitions

In the Rally-O races, the pair formed by the dog and the conductor is always moving, carry out exercises shown on the signs placed at each station. After the starting signal (“Avanti”) given by the judge, the binomial acts **autonomously** to finish the exercise sequence correctly. Communication between the dog and the conductor throughout the race must be encouraged and not penalized.

Each race course must include more than: five (5) breaks or stops in the L1 class, seven (7) in the L2 and L3 classes. During these breaks or stops the dog might be asked to carry out some exercises like “sit”, “ground”, “front”, “heel”, “stay” or “stand up”.



Registrazione n. 2011004362 del 21/10/2011



# FEDERAZIONE ITALIANA CINOFILIA SPORT E SOCCORSO

ASSOCIAZIONE DI PROMOZIONE SOCIALE – iscriz. N. 77 Reg. Naz. Min. Lav. e Politiche Soc. (L. 7-12-2000 n. 383)

[www.ficss.it](http://www.ficss.it) – e-mail: [segreteria@ficss.it](mailto:segreteria@ficss.it)

## ASI SETTORE CINOFILIA



Rev. 1-2017

Exercises are indicated by the signs and each class will have to face a different number of exercises.

### BEGINNERS (L1): OPEN

**DOG ON A LEASH –15 – 20 STATIONS ON THE RACE COURSE**

### BASIC (L2): ELITE

**FREE DOG –15 – 20 STATIONS ON THE RACE COURSE**

### ADVANCED (L3): ELITE

**FREE DOG –15 - 20 STATIONS ON THE RACE COURSE**

### MEASUREMENTS OF THE EQUIPMENT BASED ON THE HEIGHT OF THE DOG

Height of the dog at the withers	Height of the jump	Length of the long jump
Up to 35 cm	20 cm	40 cm
From 35 to less than 50 cm	35 cm	65 cm
More than 50 cm	50 cm	90 cm

Each exercise to be done is fully described on the signs, traceable in this section of the regulation in bold (for example: normal pace conduct) and signs might even show a helpful picture. Except when indicated on the signs, the pair must proceed at a normal pace to go from one station to the next. The conduct from one station to another is assessed by the judge.

**L1 CLASS OF RALLY-O INVOLVES EXERCISES FROM N° 1 TO N° 30 + START AND FINISH.**

**L2 CLASS OF RALLY-O INVOLVES EXERCISES FROM N° 1 TO N° 48 + START AND FINISH.**

**L3 CLASS OF RALLY-O INVOLVES EXERCISES FROM N° 1 TO N° 63 + START AND FINISH.**

Qualifications obtained in the races evaluated on score and time are as follows:

### EXCELLENT

Final score between 191 and 200 (210)

### VERY GOOD

Final score between 180 and 190

### GOOD

Final score between 170 and 179

### N. Q.

Final score less than 170

Classification will be determined as follow:

**L1 A on best score. In case of a tie the first 6 exercises will be repeated. In case of another tie the best time will be taken into account. L2 A and L3 A on best time together with best score.**

### Art. 7 Official Signs Description

At all the “STOP” signs the dog must be reinforced.

Some signs show a stopwatch to remind the conductors that before proceeding he/she has to count the seconds indicated there.



Registrazione n. 2011004362 del 21/10/2011

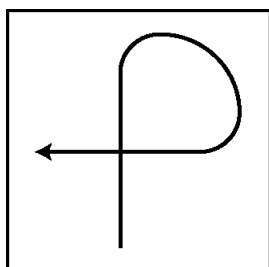
## LEVEL 1

On the Level 1 race course the dog has to be kept on a leash, with the exception of Bonus 1 and 3 exercises.

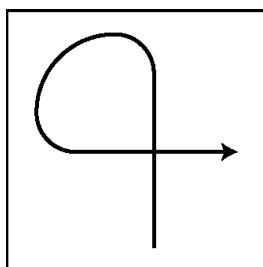
The Level 1 race course consists of 15-20 stations, not considering Start, Finish and Bonus.

Level 1 is divided in two Classes: A and B. A Class s for all the contestants that have to qualify for Level 1. B Class is for those who already have the A Class qualification. Once the Level 1 qualification is obtained, it is possible to continue competing in the B Class only.

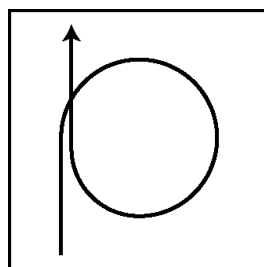
1. Stop – Sit: while walking, the couple stops and the dog sits in the position “to the heel”; then binomial starts again.
2. Stop – Sit – Stand up: while walking, the couple stops and the dog sits; the conductor puts the dog back on his paws and the binomial starts again.
3. Stop – Sit - Ground: while walking, the couple stops, the dog sits and then it is put on the ground; the binomial starts again immediately. (The dog starts directly from the ground)
4. Stop – Sit– Ground – Sit: while walking, the couple stops, the dog sits ; it is put on the ground and then sits again. Then binomial starts again.
5. Stop – Sit – Turn around: in while walking, the couple stops, the dog sits; the conductor walks then around the dog in a circle (with maximum radius of 50 cm); the dog has to stand still while waiting for the conductor. Then binomial starts again.
6. Stop – Sit – Ground – Turn around: while walking, the couple stops, the dog sits; the dog is put on the ground. Then the conductor walks around the dog in a circle (with maximum radius of 50 cm); the dog has to stand still while waiting for the conductor. Then binomial starts again.
7. Turn Right: the pair makes a right turn of 90°.
8. Turn Left: the pair makes a left turn of 90°.
9. Right Turnabout: the dog and the conductor perform a turn to the right of 180°
10. Left Turnabout: the dog and the conductor perform a turn to the left of 180°
11. 270° turn to the right: the pair makes a right turn of 270° - (figure 1)
12. 270° turn to the left: the pair makes a right turn of 270° - (figure 2)
13. 360° to the right: the pair while walking makes a 360° rotation to the right - (figure 3)
14. 360° to the left: the pair while walking makes a 360° rotation to the left - (figure 4)



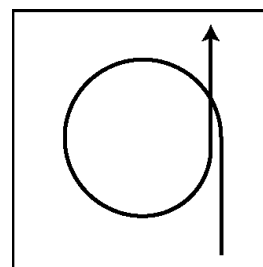
**figura 1**



**figura 2**



**figura 3**



**figura 4**

15. Call in front – To the Right - Forward: while moving, the conductor stops going forward and call the dog opposite him/her; the conductor can take a few steps back to help the dog in assuming the position asked: Afterwards the dog has to go back to the heel of the conductor turning right around the conductor.

16. Call in front – To the Left - Forward: the same as exercise 15; however, in the second part the conductor asks the dog to get to “to the heel” position turning left around the conductor and then they continue the race.

17. Call in front – To the heel from the right: the same as exercise 15; however, in the second part the conductor asks the dog to get to “to the heel” position turning to the right side of the conductor, who has to wait for the dog to be sited before continuing the race.

Rev. 1-2017

18. Call in front – To the heel from the left: the same as exercise 15; however, in the second part the conductor asks the dog to get to “to the heel” position turning to the left side of the conductor, who has to wait for the dog to be sited before continuing the race.

19. SLOW PACE: Conductor and dog walk at a slow pace

20. SLOW PACE: Conductor and dog walk at a slow pace

21. NORMAL PACE Conductor and dog walk at a normal pace.

22. . A Step to the Right Moving: While walking the dog and the conductor take a step to the right and then they continue the race. The step must be lateral and not diagonally. The dog must be at the heel.

23. Stop – 90° Pivot to the right – Stop: With the dog sited at the heel, the conductor turns right of 90°. They both stop and the couple continues the race.

24. Stop – 90° Pivot a to the Left - Stop: With the dog sited at the foot, the conductor turns left of 90°. They both stop and the couple continues the race.

25 Spiral to the Right: -dog on the outside: this exercise requires 3 cones (or similar objects) on a straight line at 1.5 metres from each other. The conductor will have to walk through the cones keeping them to his/her right, therefore the dog will remain to the outside of the spiral. Entrance, direction and exit of the spiral are shown in Figure 5.

26. Spiral to the Left – dog on the inside: this exercise is different from the previous one as far as directions are concerned. . The conductor will have to walk through the cones keeping them to his left, therefore the dog will remain to the outside of the spiral. Entrance, direction and exit of the spiral are shown in Figure 6.

27. Stop – 1-2-3 steps forward: With the dog sited to the heel, the conductor takes a step and then stops, two steps and then stops, three steps and stops. The dog moves accordingly to the conductor sitting whenever the conductor stops.

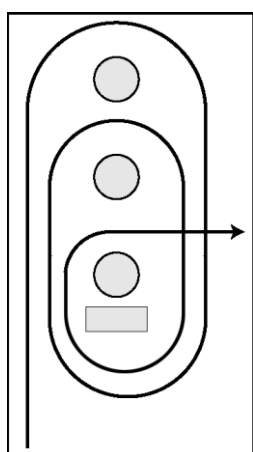
28. . Stop - 90° Pivot to the right - 1 step forward – Stop: with the dog seated at the heel, the conductor takes a pivot of 90° to the right. The conductor takes a step forward with the dog at the foot.

29. SLALOM RETURN: exercise requires 4 cones (or similar objects) on a straight line at 1.5 metres from each other. The conductor has to start between the first and the second cone. The slalom is positioned on the left side of the binomial. (Figure 7)

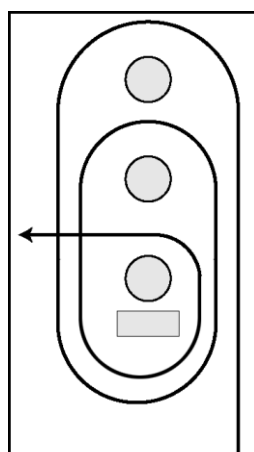
30. SLALOM (ONE WAY) The same as the previous one but the slalom ends after the 4th cone (figure 8) has to be gone through in just one direction.

31. SLALOM to the RIGHT: This exercise requires 5 cones placed one in each corner at 1.5 metres from each other. The entrance is between the first and the second cone keeping the first one on the right.

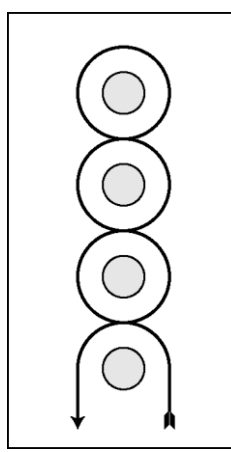
32. SLALOM to the LEFT: This exercise requires 5 cones placed one in each corner at 1.5 metres from each other. The entrance is between the first and the second cone keeping the first one on the left



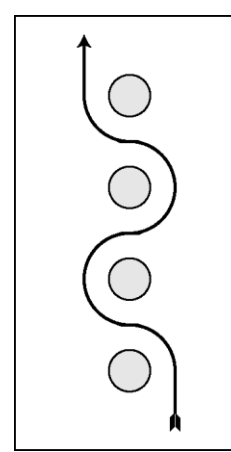
**figura 5**



**figura 6**



**figura 7**



**figura 8**

#### Bonus L1

1 A) ALT leave the dog: the conductors leaves the dog sited and goes up to the next sign

1 B) To the foot: without turning, the conductor calls the dog "to the heel".





## FEDERAZIONE ITALIANA CINOFILIA SPORT E SOCCORSO

ASSOCIAZIONE DI PROMOZIONE SOCIALE – iscriz. N. 77 Reg. Naz. Min. Lav. e Politiche Soc. (L. 7-12-2000 n. 383)

[www.ficss.it](http://www.ficss.it) – e-mail: [segreteria@ficss.it](mailto:segreteria@ficss.it)

### ASI SETTORE CINOFILIA



Rev. 1-2017

2 A) Dog opposite the conductor – Lateral Step R/L: With the dog standing opposite the conductor, he/she has to step to the right and then to the left. The dog has to maintain its position while the conductor is moving.

3 B) Turn and call the dog "to the heel" R or L: the conductor turns, calls the dog to the heel, left or right is the conductor's choice.

#### LEVEL 2

No leash is required on this race course

Level 2 race course consists of 15-20 stations not counting the Start, Finish and Bonus signs.

There are 2 classes in Level 2: A and B. A Class is for all the participants that want to qualify for Level 2. B Class is for all the contestants that already have the A Class qualification. Once the Level 2 qualification is obtained, the Level 2 races can still be done but only in the B Class.

33. STOP – LEAVE THE DOG: After leaving the dog, the conductor has to walk up to the point indicated by the sign. This exercise is completed by exercise number 34 or 35.

34. BACK- FORWARD: The conductor comes back to the dog, left in the "sit position" (station 33), the couple will then continue the race.

35. Frontal call: once the conductor gets to this station, it turns towards the dog, calls it opposite him/her. Then the dog goes back to the "to the heel" position and they continue the race.

36. In place - Stop: with the dog standing opposite the conductor, the conductor calls the dog "to the heel" turning to the right (clockwise); after the dog has sited, the pair continues the race.

37. To the foot - Stop: with the dog sitting opposite the conductor, the conductor calls the dog "to the heel" turning to the left direction (anticlockwise), after the dog has sited, the pair continues the race.

38. Stop - 180° Pivot to the right - Stop: With the dog at the heel, the conductor and the dog turn right of 180°. They stop and then they continue the race.

39. Stop – 180° Pivot to the left – Stop: With the dog at the heel, the conductor and the dog turn left of 180°. They stop and then they continue the race.

40. Stop – Back to the right and forward: as exercise 38 but without stopping after the 180° Pivot to the right.

41. Stop – Back to the left and forward: come as exercise 39 but without stopping after the 180° Pivot to the left.

42. Front– Stop -1, 2, 3 steps backwards: with the dog sitting opposite the conductor, the conductor takes a step back and stops; two steps back and stops, three steps and stops. The dog has to move towards the conductor and sit each time the conductor stops. The dog must face the conductor at all time. At the end the conductor puts the dog to the heel and then they continue the race.

43. Jump: the binomial is proceeding at the indicated pace (normal or running) and gets closer to the jump. Without stopping the conductor tells the dog to jump and they proceed after the jump (the conductor can proceed at a normal pace or run while the dog is jumping, but the initial pace must be adopted until the next sign says differently).

44. Call the dog in front while running: the conductor leaves the dog sited and runs, before the next sign he/she calls the dog in front. This sign is always followed by sign 36 or 37.

45. Moving ground and forward: while moving, the conductor stops and puts the dog to the ground without it sitting. As soon as the right position has been achieved the binomial can continue the race.

46. Stop – From sitting to fast forward: with the dog to the heel the conductor gives the command to start proceeding running; the dog has to follow him/her at the same pace (this exercise is followed by exercise 21: normal pace conduct).





## FEDERAZIONE ITALIANA CINOFILIA SPORT E SOCCORSO

ASSOCIAZIONE DI PROMOZIONE SOCIALE – iscriz. N. 77 Reg. Naz. Min. Lav. e Politiche Soc. (L. 7-12-2000 n. 383)

[www.ficss.it](http://www.ficss.it) – e-mail: [segreteria@ficss.it](mailto:segreteria@ficss.it)

### ASI SETTORE CINOFILIA



Rev. 1-2017

47. Stop – Step to the right – Stop: with the dog to the heel, the conductor takes a step to the right ending the exercise with the dog sited.

48. Classic turnabout: while proceeding, the conductor executes a turnabout to the left, at the same time the dog turns to the right around the conductor and it goes back to “to the heel” position.

#### Bonus L2

A1) Moving ground and leave the dog: while moving, the conductor stops and puts the dog to the ground without it sitting, leaves the dog and gets to the next sign.

B1) Without turning the conductor calls the dog to the heel: the conductor turns, calls the dog in front, sited and subsequently to the heel (right or left, it's up to the conductor).

A2) Stop – Stand-Examination: the conductor stops and after the dog sat, the conductor puts it in a standing position; after dropping the dog and getting to the next sign.

B2) Back & forward: after the judge or the steward have touched the dog in three points (head, back, tail), the conductor goes back to the dog standing on 4 paws and continues the race.

A3) Stop leave the dog: the conductor leaves the dog sited and goes to the next sign.

B3) Turn – Dog to the ground: the conductor turns, asks the dog to assume the position “to the ground”, then he/she goes back to it. Here the exercise ends.

### LEVEL 3

No leash is required on this race course

Level 3 race course consists of 15-20 stations not counting the Start, Finish and Bonus signs.

There are 2 classes in Level 3: A and B. A Class is for all the participants that want to qualify for Level 3. B Class is for all the contestants that already have the A Class qualification. Once the Level 3 qualification is obtained, the Level 3 races can still be done but only in the B Class.

49. Standing while walking – turn around: while moving, the conductor stops and asks the dog to remain in the standing position. Once the dog has stopped, the conductor turns around the dog anticlockwise and then they continue the race.

50. Standing while walking: while moving, the conductor stops and asks the dog to remain in the standing position, leaves the dog and goes to sign 51.

51. Turn and call the dog: after leaving the dog (see exercise 50), the conductor has to proceed to the point indicated by the sign, he/she stops, turns and calls the dog. The dog sits opposite the conductor and gets to “to the heel” position (right or left, it's up to the conductor).

52. Standing while walking - positions: while moving, the conductor stops and asks the dog to remain in the standing position, leaves the dog and goes to sign 53.

53. Ground – Sit – Call after leaving the dog (see exercise 52), the conductor has to proceed to the point indicated by the sign, then he/she stops, turns and asks the dog to assume the position “to the ground”, then “sit” and afterwards calls the dog to him/her. The dog sits opposite the conductor and gets to “to the heel” position (right or left, it's up to the conductor).

54. Three steps back: while moving, without changing direction, the conductor has to take three steps walking backwards with the dog to the heel and then continue facing forward.

55. Stop – leave the dog to be called for the jump: the conductor leaves the dog sited and goes to sign 56.

56. Turn – call the dog to the jump – in front – to the heel (r/l): once the conductor goes up to sign 56, he/she turns and calls the dog making it jump the obstacle; the call can be either verbal or gestural. After making the jump, the conductor has to stop the dog and sit it opposite him/her. The conductor gets the dog back on its paws and they continue the race.

57. Stop – leave the dog to be directed to the jump: the conductor leaves the dog sited and goes to sign 58.

58. Turn – call the dog directing it to the jump: once the conductor goes up to sign 58, he/she turns and calls the dog directing to jumping the obstacle, the call can be either verbal or gestural. After making the jump, the conductor has to stop the dog and sit it opposite him/her. The conductor gets the dog back on its paws and they continue the race.







## FEDERAZIONE ITALIANA CINOFILIA SPORT E SOCCORSO

ASSOCIAZIONE DI PROMOZIONE SOCIALE – iscriz. N. 77 Reg. Naz. Min. Lav. e Politiche Soc. (L. 7-12-2000 n. 383)

[www.ficss.it](http://www.ficss.it) – e-mail: [segreteria@ficss.it](mailto:segreteria@ficss.it)

### ASI SETTORE CINOFILIA



Rev. 1-2017

59. Turn right, 1-2 steps – dog to the ground: while moving the conductor turns right and after 1 or 2 steps (conductor's choice) he/she asks the dog to assume the position to the ground without sitting first. Once the position is assumed, the conductor proceeds with the dog to the heel.

60. Turn left, 1-2 steps – dog to the ground: while moving, the conductor turns left and after 1 or 2 steps (conductor's choice) he/she asks the dog to assume the position to the ground without sitting first. Once the position is assumed, the conductor proceeds with the dog to the heel.

61. Halt – leave the dog to call it and getting it "to the ground: the conductor leaves the dog sited and goes to sign 62.

62. Turn - call – to the ground - call: the conductor has to command the dog to assume the "to the ground" position. After the second command the dog has to sit opposite the conductor and he/she puts the dog to the heel in the way he/she likes the best.

63. Call in front – turnabout to the right - forward: the conductor goes up to the sign and calls the dog opposite him/her. The conductor can take a few steps backwards to make this easier and get the dog sited. The conductor has to make a clockwise turnabout (just the conductor) and then continue the race with dog at the heel.

#### Bonus L3

1) Turnabout – Stop – Retrieve: while moving, the conductor and the dog go towards the Bonus sign. Once the pair has gone up to the sign, the binomial makes a turnabout while an assistant puts a dummy on the ground. After receiving authorization the conductor sends the dog to retrieve the dummy and get it back sitting opposite him/her. Once the conductor has taken the dummy, the dog has to go back to "to the heel" position.

2) Dog in front – 3 steps backwards: while moving, the conductor calls the dog in front and gets it sited. Afterwards he/she will ask the dog to take three steps backwards (the conductor is moving towards the dog).

A3) Stop and leave the dog

B3) Turn and call the dog: after turning towards the dog, the conductor calls it and then puts dog to the heel in the way he/she likes the best (while the dog is going towards the conductor, the Judge starts walking towards the dog when the conductor calls it).

4) STOP – ON THE TABLE - SIT: The conductor gives the dog the signal to get on the table; there it will be asked to stay sited for 5 seconds.

5) IN FRONT – SIT – STAND UP – BACK – IN PLACE: while the couple is walking, the conductor stops and brings the dog in front of him/her getting it to sit. After 3 second tells the dog to "STAND". Subsequently the dog is asked to take at least a step back. Then the dog is called back to its place. To get to the left side of the conductor the dog will have to walk around him in a clockwise direction.

